

# GTX<sup>†</sup> 230

Comfort, control and power are always in style.

## KEY FEATURES

- Rotax<sup>®</sup> 1630 ACE™ - 230
- ST3™ Hull
- iDF - Intelligent Debris-Free Pump System
- iBR<sup>®</sup> - Intelligent Brake & Reverse\*
- Variable Trim System (VTS™)
- LinQ™ attachment system
- Boarding ladder
- Direct-access front storage
- Watertight phone compartment
- Tech Package (optional): BRP Audio - premium system & Full color 7.8" wide display, USB port
- BRP Audio - premium system (optional)



Blue Abyss / Gulfstream Blue

iDF/iTC/iBR/ST3/CLCS/ECO

## CAPACITY

|                          |        |
|--------------------------|--------|
| Rider capacity           | 3      |
| Weight capacity          | 272 kg |
| Fuel capacity            | 70 L   |
| Glove box                | 2.9 L  |
| Front bin                | 96 L   |
| Storage capacity - Total | 98.9 L |

## DIMENSIONS

|                           |          |
|---------------------------|----------|
| Length (bumper to bumper) | 345.1 cm |
| Width                     | 125 cm   |
| Height                    | 114 cm   |

## HULL

|          |            |
|----------|------------|
| Type     | ST3™ Hull  |
| Material | Fiberglass |

## OTHER FEATURES

|  |                             |
|--|-----------------------------|
| Ergolock™ two-piece seat with stepped design   | Handle Grips with palm rest |
| Seat strap                                     | Footwell carpets            |
| iBR <sup>®</sup> - Intelligent Brake & Reverse | Large swim platform         |
| RF D.E.S.S.™ key                               | Tilt steering               |
| Wide-angle mirrors                             | Ski tow eye                 |

## ROTAX ENGINE

|                 | 1630 ACE™ - 230                        |
|-----------------|--|
| Intake system   | Supercharged with external intercooler |
| Displacement    | 1,630 cc                               |
| Cooling         | Closed-Loop Cooling System (CLCS)      |
| Reverse system  | Electronic iBR <sup>®</sup> *          |
| Starter         | Electric                               |
| Fuel type       | 95 octane                              |
| Throttle system | iTC™ (Intelligent Throttle Control)    |
| Exhaust System  | D-Sea-Bel™ system                      |

## GAUGE

| Type of gauge     | Large panoramic 7.8" wide LCD display (with Tech Package)<br>7.6" wide digital display |                                |
|-------------------|--|--------------------------------|
| Main functions    | BRP Connect (opt.)   | RPM                            |
|                   | Music (opt.)   | Clock                          |
|                   | Navigation (opt.)  | VTS™                           |
|                   | Bluetooth <sup>†</sup> connectivity (opt.)   | Fuel consumption (opt.)        |
|                   | Speedometer  | Fuel autonomy<br>Vehicle hours |
| iTC System - mode | Sport mode   | Slow mode                      |
|                   | ECO <sup>®</sup> mode  | Speed regulator                |

## WEIGHT

|                                    |          |
|------------------------------------|----------|
| Dry weight (oil, coolant, no fuel) | 367 kg   |
| Power to weight ratio (HP / lbs)   | 0.284302 |

## WARRANTY

BRP limited warranty covers the watercraft for two years.

\*Electronic brake, neutral and reverse.

1 Bin organizers are not included.

†GTX is a trademark of Castrol Limited used under license.

‡Bluetooth<sup>†</sup> is a registered trademark owned by Bluetooth<sup>†</sup> SIG, Inc. and any use of such trademarks by BRP is under license.

**FEATURE HIGHLIGHTS**



**iDF - Intelligent Debris Free system**

An innovative, industry-first system that allows you to free your pump of weeds and debris with intuitive handlebar-activated controls.



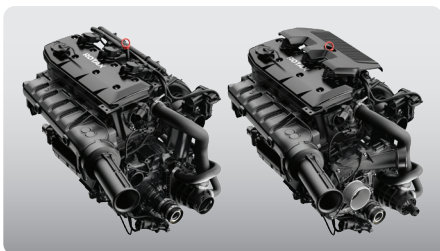
**Tech Package (optional)**

Levels up entertainment and functionality on the water. It includes a factory-installed, truly waterproof Bluetooth<sup>‡</sup> audio system, a 7.8" color display and a usb port.



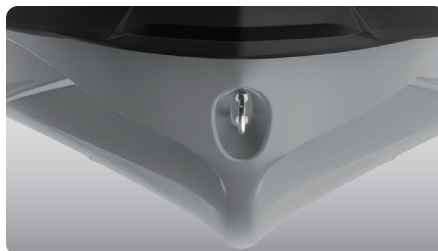
**Swim platform with integrated LinQ™ system**

Exclusive quick-attach system on the largest swim platform in the industry that allows for easy installation of accessories.



**ROTAX® 1630 ACE™ - 230**

The 169.16 kW (230 hp) supercharged version allows you to level up the performance to your liking.



**ST3™ Hull**

An innovative hull that sets the benchmark for rough water handling, stability, and offshore performance.<sup>4</sup>



**Direct-Access Front Storage**

All your gear within arm's reach thanks to a 96 L front storage area, easily accessible from a seated position. Simply raise the handlebars to access essentials for any adventure.

©2024 Bombardier Recreational Products Inc., (BRP). All rights reserved. ®, TM and the BRP logo are trademarks of Bombardier Recreational Products Inc. or its affiliates. All product comparisons, industry and market claims refer to new sit-down PWC with 4-stroke engines. Watercraft performance may vary depending on, among other things, general conditions, ambient temperature, altitude, riding ability and rider/passenger weight. Testing of competitive models done under identical conditions. Because of our ongoing commitment to product quality and innovation, BRP reserves the right at any time to discontinue or change specifications, price, design, features, models, or equipment without incurring any obligation. †Garmin is a trademark of Garmin Ltd. or its subsidiaries.